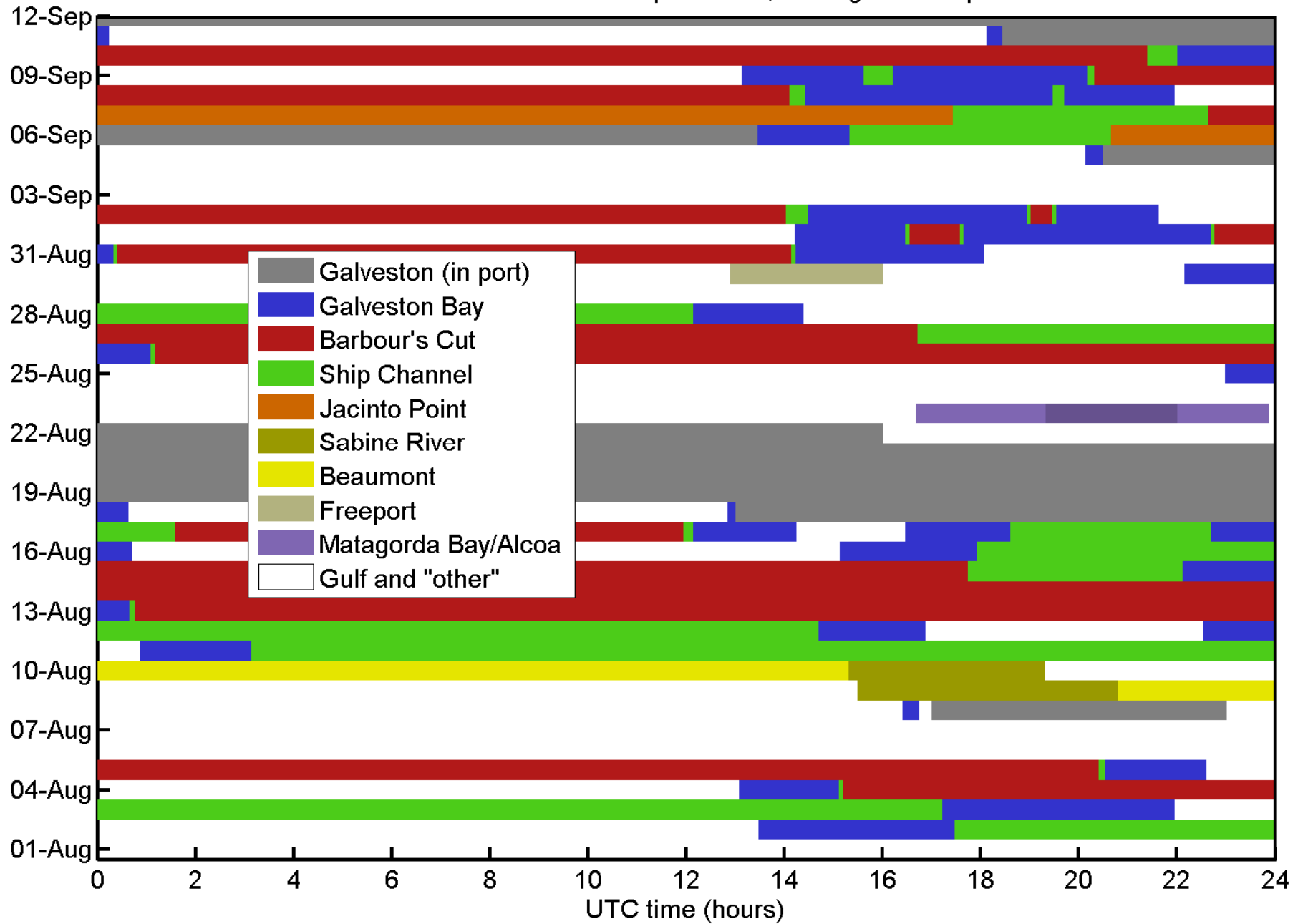


TexAQS 2006: RV Brown Ship Position, 01-Aug to 11-Sept 2006



This document outlines the definitions of the locations that are patch-plotted in the previous slide.

As for the corresponding text file:

All the time and lat/lon data for this file comes from PMEL (Jim Johnson is the point of contact).

The file contains 10 columns with the following information:

- The 6 basic time parameters (Y,M,D,H,MN,S)
- Decimal day of year
- Lat
- Lon
- Position parameter (1-10)

It should all be pretty clear once you see the header. If not, feel free to email sara.tucker@noaa.gov with questions



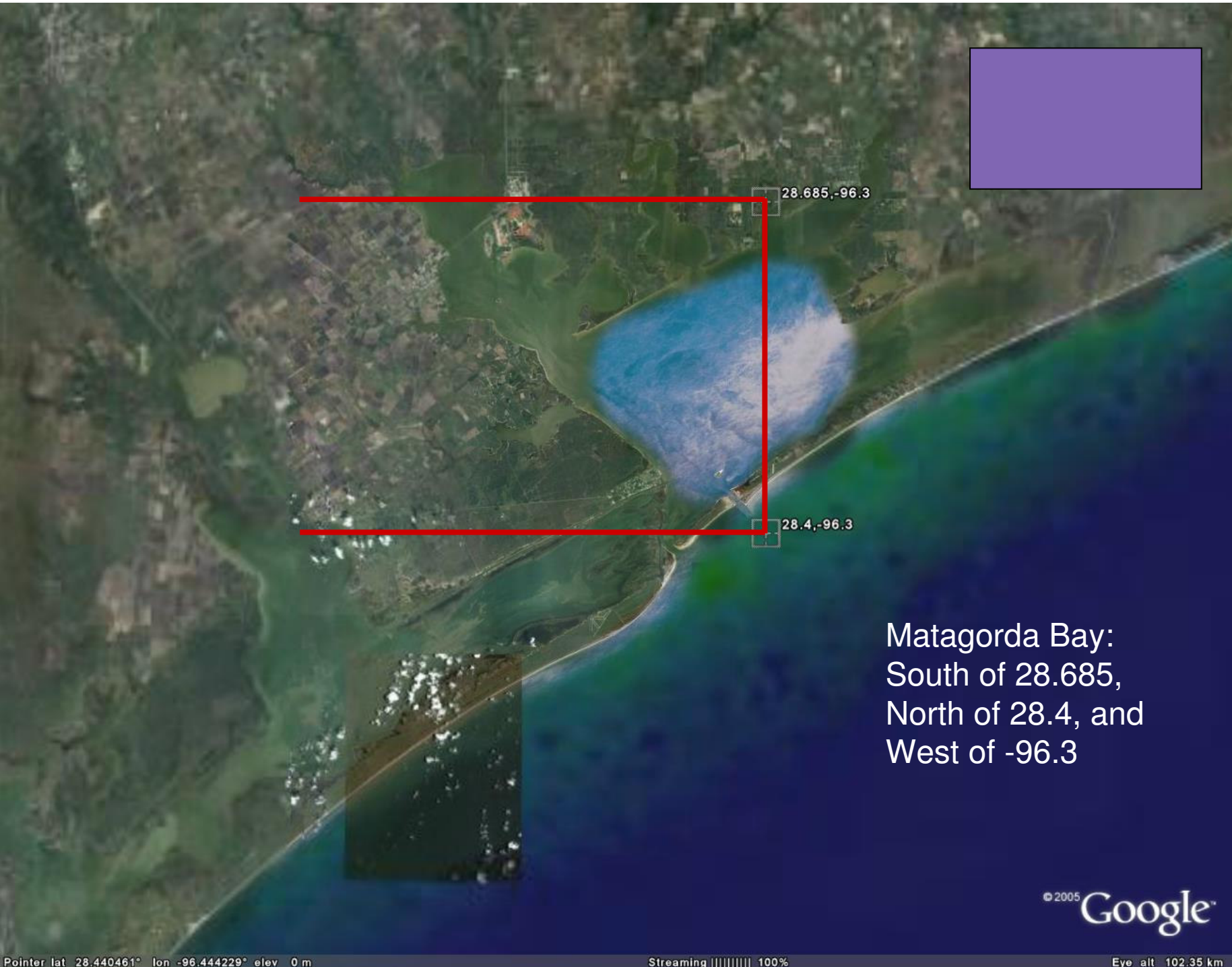
Galveston Bay: NW of 29.3292,-94.7222



Houston ship channel: Northwest of 29.6782 (bottom of BC), -94.935, but not in Barbour's Cut.



Barbour's cut: SE of 29.6875,-95.0103 and NW of 29.6782,-94.9883



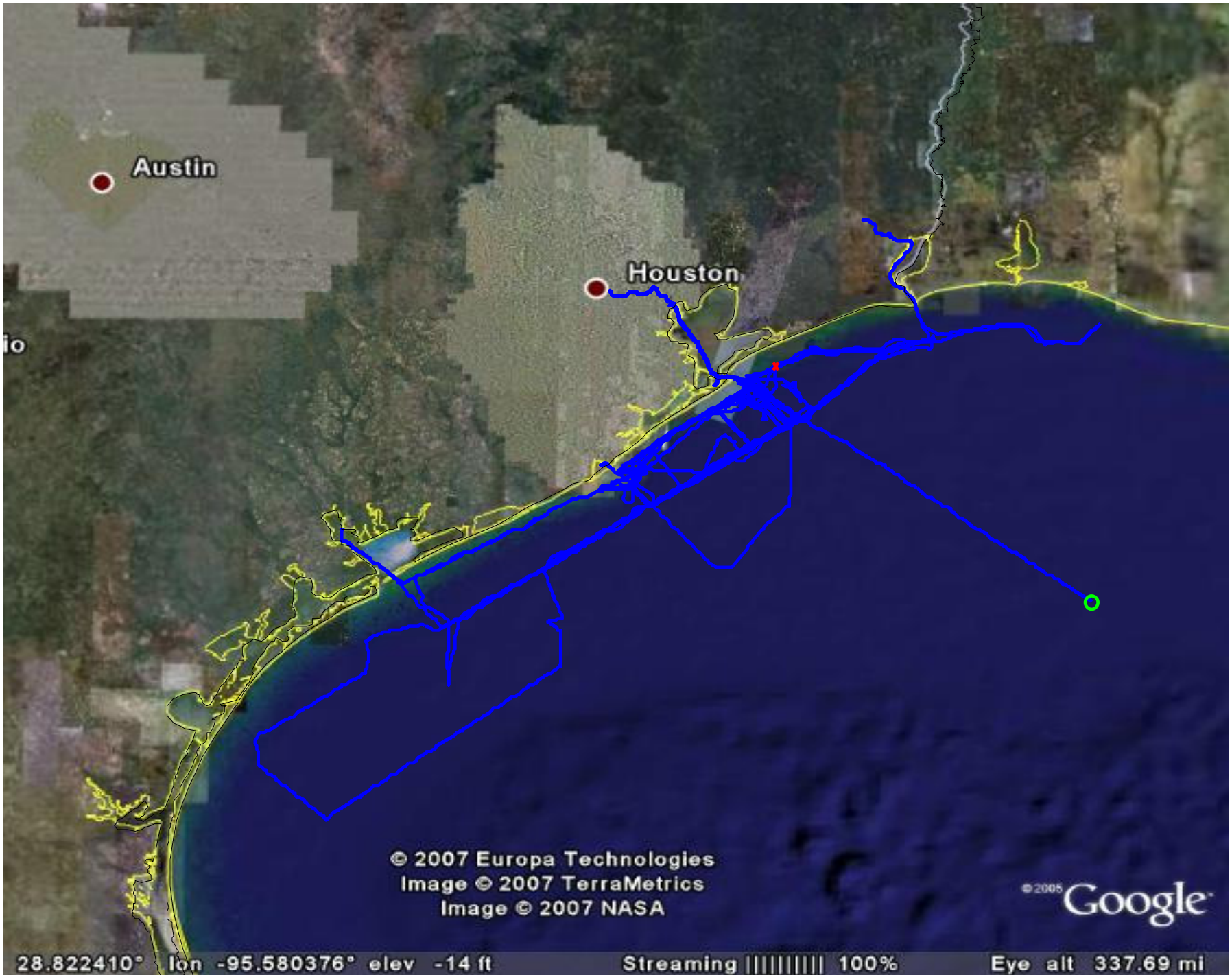
Matagorda Bay:
South of 28.685,
North of 28.4, and
West of -96.3

The rest of the location values were generated using log-book notes or by simply looking at the ship locations and noting the beginning and end times [y,m,d,H,M,S]

- The Freeport visit:
 - [2006,8,30,12,55,0] - [2006,8,30,16,0,0]
- Port stop in Galveston on 1st leg:
 - [2006,8,8,17,0,0] - [2006,8,8,23,0,0]
- Up and down Sabine River (to Beaumont):
 - [2006,8,9,15,50,0] - [2006,8,10,19,5,0]
- Port stop in Beaumont:
 - [2006,8,9,20,50,0] - [2006,8,10,15,20,0]
- Between cruise legs, in Galveston:
 - [2006,8,18,13,0,0]- [2006,8,22,16,0,0]
- Port stop in Galveston on 2nd leg:
 - [2006,9,5,20,30,0]-[2006,9,6,13,26,0]
- Jacinto Point
 - [2006,9,6,20,40,0]-[2006,9,7,17,25,0]
- LAST DAY in Galveston END of 2nd leg:
 - [2006,9,11,18,27,0]-[2006,9,11,24,0,0]

Location Summary

1. Gulf: Default (background)
2. Galveston Bay: NW of [29.3292,-94.7222]
3. Galveston Port: Timing
4. Sabine River: Timing
5. Beaumont: Timing
6. Barbour's Cut: SE of [29.6875,-95.0103] and NW of [29.6782,-94.9883]
7. Houston Ship Channel: NW of [29.6782 , -94.9350]
8. Freeport: Timing
9. Matagorda Bay and Alcoa: South of 28.685, North of 28.4, and West of -96.3
10. Jacinto Point: Timing



Austin

Houston

© 2007 Europa Technologies
Image © 2007 TerraMetrics
Image © 2007 NASA

©2005 Google

28.822410° lon -95.580376° elev -14 ft Streaming ||||| 100% Eye alt 337.69 mi

Changes to original location parameter file

- Added Jacinto Point
- Changed wording of “Port Arthur” to “Sabine River”
- Barbour’s cut remains the same but the definition of the ship channel dropped down to the Southern limit of Barbour’s cut (makes sense when looking at a picture of Galveston Bay)
- Matagorda Bay limits were adjusted slightly. The stop in Alcoa is shown as a darker purple on the plot, but is listed as position parameter 9 (the same as the rest of Matagorda Bay)
- Some of the start/stop times have been adjusted by 5-10 minutes based on notes and/or map data (improved precision)